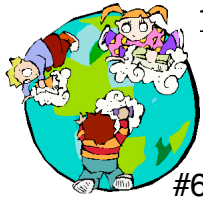


Math Superstars

Hopefully Helpful Hints

Week 20

Welcome to the exciting world of mathematics



1st Grade

#2 Divide the 12 blocks “fairly” between the 3 apples- how much is each one?

#4 “Speaks no evil” monkey is the one covering its mouth!!

#6 Make sure you use at least one of each shape in your picture- you can draw a house, bus...



2nd Grade

#1 Try labeling each state in pencil (so you can erase) using the key. Remember, the outside states **cannot** be blue!

#4 Draw the 6 pots with 5 flowers in each, then count! This is the same as multiplying 6 by 5.

#8 Cross out the shirts that do not fit the clues. The one left will be the answer!



3rd Grade

#4 Guess and check can be used. Hint: it can be solved using **2 animal stickers...**

#5 (2,6) means go to the right 2 and then up from there 6

#6 oz=ounces, LB=pound

Use: 16oz=1LB (so a pound is heavier than an ounce)

4th Grade



#2 and #3 Use: 16 oz = 1 pound 8 oz =1/2 pound or 25 cents

#5 1/2 dozen eggs = 6; then find 1/3 of the 6 to get how many are broken- the question asks how many are **not broken!**

#6 This only works at the points where an **odd number of paths** go in or out from the point

5th Grade



#1 Proper divisors are the numbers that can go into the given number (its factors) **not including itself**

#2 Start at the bottom and work backwards

#5 Start with the 10 oranges that are left and work backwards from there

#7 Use: **17 students** like chocolate cupcakes to figure out the percent